

# SUNDOWNER LED FORWARD THROW SCONCE

Earn LEED Credits – Up to 18 Year Maintenance Cycle



## FEATURES

- Diecast aluminum housing
- Heat sunk LED boards
- 80% optical efficiency
- Outstanding uniformity
- White 4100K -70 CRI LEDs
- Replaceable components
- Stippled lens
- Luxeon Rebel LED's
- Manufactured in USA

## BENEFITS

- Durable construction
- 60,000+ expected LED life
- Fewer fixtures
- Better visibility
- Accurate color rendition
- Easily maintained
- Reduces glare
- World class components
- Supports local workforce

## APPLICATIONS

- Schools
- Parking garages
- Column mount
- Universities
- Doorways
- Pedestrian tunnels
- Commercial Buildings
- Adjacent parking areas

## Specifications/Features

### GENERAL

- Premium constructed LED wall mounted luminaire
- Lowest possible energy
- No maintenance for up to 18 years
- Replaces up to 175MH

### CONSTRUCTION

- Die cast hinged front and rear housing
- Built in template for electrical box mounting
- Stainless steel captive fasteners
- Polyester powder finish
- Adaptive LED optics
- Custom colors
- Continuous closed cell captive gasket
- LED obscuring stippled lens
- Heat sunk LED boards
- Low LED junction temperatures

### LISTINGS/ELECTRICAL

- ETL wet location listed for US and Canada
- Electronic LED driver
- Five year limited warranty
- -40°F starting
- 7W, 14W, & 21W sizes

Patent Pending Optics



Tunnel



Storage Units

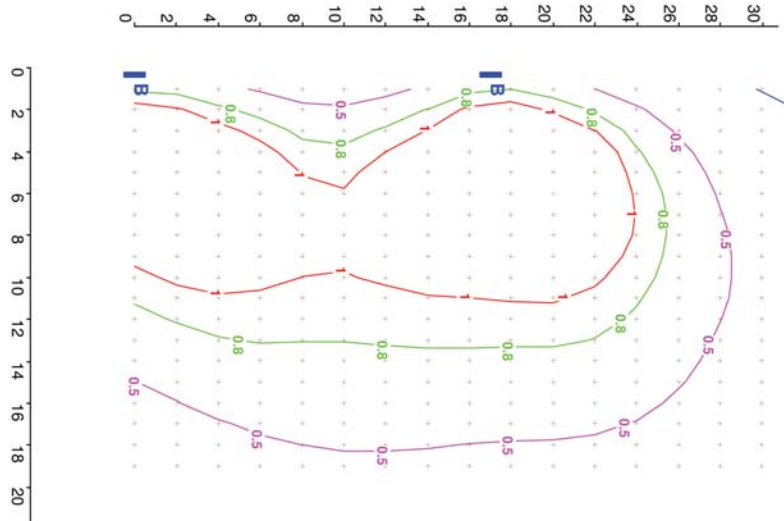
## Photometrics

**SNDSC-13B-12L-S**  
**10' mounting - 17' spacing**  
**Test # 144231**

Note: To visualize actual visibility convert  
 Horizontal FC to Vertical FC.  
 Vert. FC = the Hor. FC multiplied by the  
 distance away from the fixture ÷ by 10

### Vert vs. Hor FC on Ground

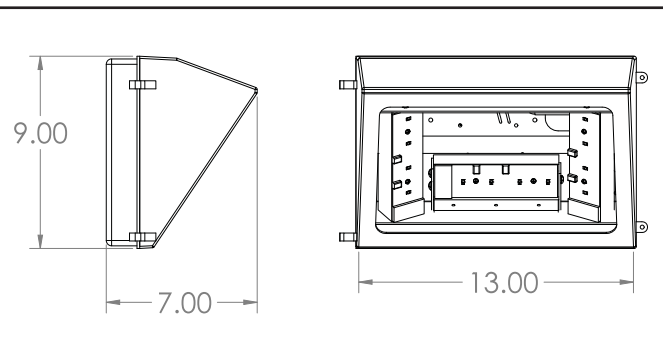
Dist. from SNDSC	FC Hor	FC Vert
10'	1	1
13'	.8	1
18'	.5	.9



### TEN YEAR OPERATING COST COMPARISON

Fixture	Hours/year	Lamp life	Relamp Cost	Watts	Cost/yr at .10 KWH	Power Cost	Total Cost
Sundowner Sconce	4380	60,000	0	21	\$9.20	\$92	\$92
175 MH Wallpack	4380	12,000	\$150	210	\$92	\$920	\$1070

## Dimensions - 13"



## SUNDOWNER LED Catalogue Numbers

SNDSC	13	B	12L	S	2
SNDSC					Voltage 1 - 120V 2 - 277V 3 - 347V
Size 13 - 13"					Tempered Lens S - Stippled glass
Finish B - Dark bronze C - Custom RAL			LEDs 4L - 4 LEDs (7W) 8L - 8 LEDs (14W) 12L - 12 LEDs (21W)		

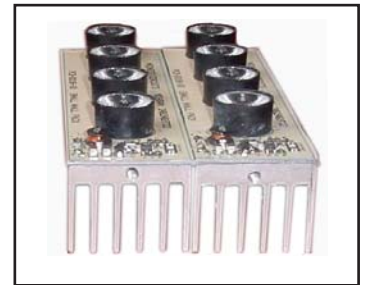
Guth utilizes the services of U.L. and ETL for listing products  
 Specifications and data are subject to change without notice.

## GUTH LED OPTICAL ADVANTAGE

The patent pending optics limits stray light and provides almost perfect uniformity within the task area. A conventional HID wallpack typically provides 8 to 10 footcandles below the fixture and 1 in between. The Guth LED provides 1 or 2 underneath and 1 in between. This accounts for the vast reduction in energy and improved visibility.



Stippled Lens Hides LEDs



LED Heat Sink

Note: Use Guth GPCF inverter for emergency lighting

### Project Name:

Type	Catalogue Number	Comments

Guth Lighting is a Philips group brand - 01/09