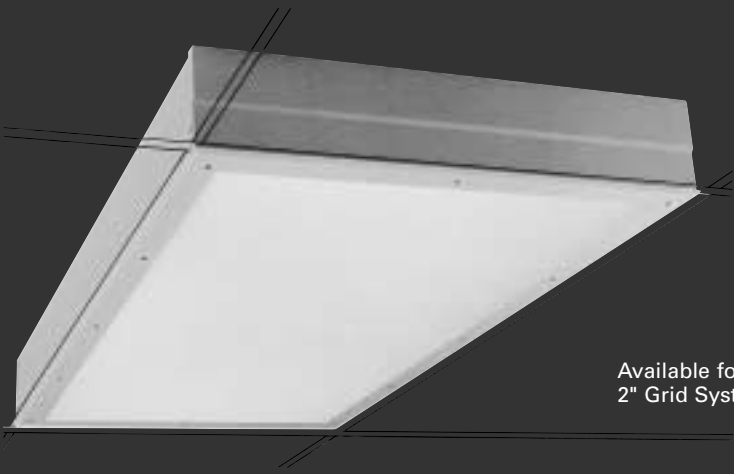


KLEENSEAL™ KTR 300 SERIES WITH OPTIONAL "VISION+" LOUVER

Sealed, Overlap Door Frame and Sealed Housing



Available for
2" Grid Systems



FEATURES

- CRS or Stainless steel housing
- Fits 1", 1-1/2" or 2" grid
- Grid, flange or gel seal mounting
- Optional "Vision+" Louver
- Overlap door
- Sealed junction box

BENEFITS

- Suitable for environment
- Lower installation cost
- Versatile usage
- No computer glare
- 400 PSI Hosedown
- No ingress from raceway

APPLICATIONS

- Class 100-1000 cleanrooms
- Pharmaceutical
- Chemical facilities
- Food processing
- Hosedown areas
- Treatment plants

Specifications/Features

GENERAL

- Totally sealed recessed fluorescent troffer.
- Built to exceed Fed-Std-209E.
- Designed for 1", 1-1/2" and 2" grid or flange mounting.
- Accommodates most 2" gasket grid or gel-seal grid systems.

CONSTRUCTION

- All penetrations and joints silicone sealed.
- Unique "SEALED JUNCTION BOX" prevents contamination thru raceway system.
- Flange mounting available. Total adjustability of swing mount bracket is 2-1/4" (1" to 3-1/4" from ceiling face).
- Continuous row mounting option for flange units.
- All rivets are closed end, sealed rivets.
- Seismic support mounting feature standard.
- 3/4" knife edge standard for gel-seal grid systems. 2" optional.
- 20 ga. CRS; stainless steel optional.
- White epoxy/polyester powder coat finish.

DOOR FRAME/LENS

- 18 ga. CRS one-piece double thickness door finished in white epoxy polyester powder coat standard.
- 18 ga. one-piece double thickness 304 brushed stainless steel or 4-piece extruded aluminum anodized available.
- Countersunk Phillips stainless gasketed screws on 12" centers.
- Lens .125" thick acrylic prismatic, silicone sealed to door frame. Prisms up standard, lens with prisms down optional.



Captive, gasketed stainless steel screws draw the door frame tight for ultimate seal.



Sealed Junction Box prevents contaminants from entering fixture.



1-piece, double thickness CRS door frames are corrosion-resistant.

- Frame supported by chains for ease of maintenance.
- Optional Vision+ parabolic louver has clear acrylic underlay to provide a sealed door assembly. Eliminates direct glare on computer screens and meets IES/ANSI human visual comfort standards. Increases 0-60 degree efficiency 12%. Eliminates light above 60 degrees. Choose VPL lens option.

LISTINGS

- Listed "Suitable for Wet Locations — Covered Ceilings Only."
- Listed for use in USA and Canada.
- Door frame tested to 400 PSI hosedown. Higher ratings available.
- NSF International.
- Listed "Suitable for use as raceway" maximum of 4 No. 12 AWG.

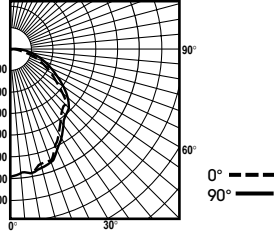
ELECTRICAL

- Ballasts mounted to housing by stake-in-screws.
- All fixtures carry the IBEW Union label to ensure quality.
- T8: Electronic, IS 0°F, 10% THD.
- T5: Electronic, PS 0°F, 10% THD.

Photometrics

Coefficients of Utilization
4 Lamp, 32W AP3 prisms up
K3-244F32FG-3AP3B

| Ceiling Refl. | 80% | | | 50% | | | 10% | | |
|---------------|--|-----|-----|-----|-----|-----|-----|-----|-----|
| | 50 | 30 | 10 | 50 | 30 | 10 | 50 | 30 | 10 |
| RCR | 20% Effective Floor Cavity Reflectance | | | | | | | | |
| 1 | .68 | .66 | .63 | .64 | .62 | .60 | .59 | .58 | .57 |
| 2 | .60 | .55 | .52 | .56 | .53 | .50 | .52 | .50 | .48 |
| 3 | .53 | .47 | .43 | .50 | .45 | .42 | .46 | .43 | .41 |
| 4 | .47 | .41 | .37 | .44 | .40 | .36 | .41 | .38 | .35 |
| 5 | .42 | .36 | .32 | .40 | .35 | .31 | .37 | .34 | .31 |
| 6 | .38 | .32 | .28 | .36 | .31 | .27 | .34 | .30 | .27 |
| 7 | .34 | .29 | .25 | .33 | .28 | .24 | .31 | .27 | .24 |
| 8 | .31 | .26 | .22 | .30 | .25 | .22 | .28 | .24 | .22 |
| 9 | .29 | .23 | .20 | .28 | .23 | .20 | .26 | .22 | .19 |
| 10 | .27 | .21 | .18 | .26 | .21 | .18 | .24 | .21 | .18 |

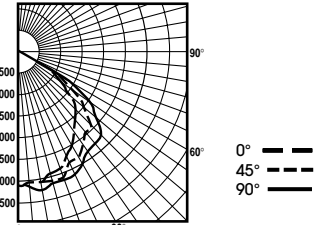


Report No. P11485

S/MH Ratio 1.2:1.0
Total Lamp Lumens 11800
Fixture Efficiency 65.4%

Coefficients of Utilization
4 Lamp, 32W vision plus louver
K3-244F32FG-3VPL

| Ceiling Refl. | 80% | | | 50% | | | 10% | | |
|---------------|--|-----|-----|-----|-----|-----|-----|-----|-----|
| | 50 | 30 | 10 | 50 | 30 | 10 | 50 | 30 | 10 |
| RCR | 20% Effective Floor Cavity Reflectance | | | | | | | | |
| 1 | .71 | .69 | .67 | .67 | .65 | .64 | .62 | .61 | .60 |
| 2 | .64 | .60 | .57 | .60 | .58 | .55 | .56 | .54 | .53 |
| 3 | .57 | .53 | .49 | .54 | .51 | .48 | .51 | .48 | .46 |
| 4 | .51 | .46 | .42 | .49 | .45 | .42 | .46 | .43 | .41 |
| 5 | .46 | .41 | .37 | .44 | .40 | .36 | .42 | .38 | .36 |
| 6 | .42 | .36 | .33 | .40 | .36 | .32 | .38 | .34 | .32 |
| 7 | .38 | .33 | .29 | .36 | .32 | .29 | .35 | .31 | .28 |
| 8 | .35 | .29 | .26 | .33 | .29 | .26 | .32 | .28 | .25 |
| 9 | .32 | .27 | .23 | .31 | .26 | .23 | .29 | .26 | .23 |
| 10 | .29 | .24 | .21 | .28 | .24 | .21 | .27 | .23 | .21 |

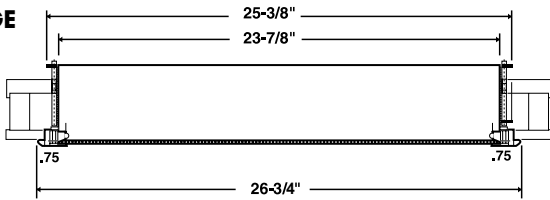


Report No. P11485

S/MH Ratio 1.4:1.0
Total Lamp Lumens 11800
Fixture Efficiency 59.4%

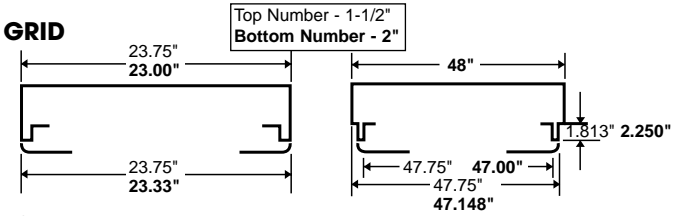
Dimensions

FLANGE

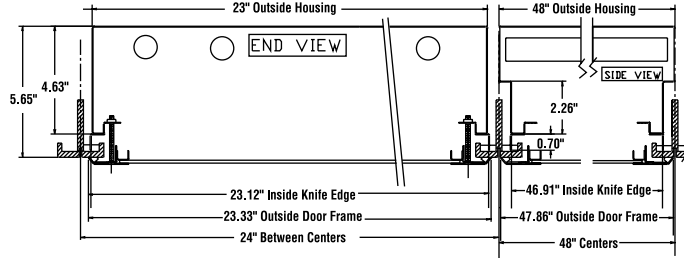


| CEILING CUT DIMENSIONS FOR FLANGE UNITS | |
|---|-----------------|
| 2 X 4 | 25-1/2 x 48-1/8 |
| 2 X 2 | 25-1/2 x 24-1/8 |
| 1 X 4 | 13-1/2 x 48-1/8 |

GRID



GEL



KTR 300 Catalog Numbers

K3-24 2 - F32 - G 3 AP3 1

SIZE
14 - 1 x 4
24 - 2 x 4
22 - 2 x 2

NUMBER OF LAMPS
2 - 2 Lamp
3 - 3 Lamp
4 - 4 Lamp
6 - 6 Lamp

LAMP TYPE
F17 - T8 17w
F32 - T8 32w
F44 - T8 High Output 44w
U31 - T8 31w U-Lamp
F14 - T5 14w
F28 - T5 28w
F54 - T5 HO 54w
U32 - T8 32w U-Lamp 6\"/>

VOLTAGE
1 - 120
2 - 277
3 - 347

LENS
AP3 - .125 Acrylic Prismatic VPL - Sealed louver
Other lens available.
See technical section.

DOOR FRAME
3 - CRS 1 piece overlap white
5 - 304 1 piece overlap stainless
10 - Aluminum 4 piece overlap anodized

MOUNTING
G - 1\", 1-1/2\"/>

Options

- "/2EB" - 2 Electronic Ballasts
- "/SFF" - GMF Slow Blow Fixture Fuse
- "/TP" - Tamper Resistant Screws
- "/DN" - Lens furnished with Prisms Down
- "/SSH" - Stainless Steel Housing
- "/2KE" - 2\"/>
- "/BEF" - Battery operated emergency system B70A. Not suitable for applications below 0°C (32°F).

| FIXTURE SIZE | LAMP TYPE | NO. OF LAMPS |
|--------------|-----------|--------------------|
| 1 x 4 | F32 | 2LT, 3LT |
| 1 x 4 | F28 | 2LT, 3LT |
| 2 x 4 | F32 | 2LT, 3LT, 4LT, 6LT |
| 2 x 4 | F28 | 2LT, 3LT, 4LT, 6LT |
| 2 x 4 | F44, F54 | 2LT, 3LT, 4LT |
| 2 x 2 | U32 | 2LT |
| 2 x 2 | U31 | 2LT, 3LT |
| 2 x 2 | F14 | 2LT, 3LT, 4LT |
| 2 x 2 | F17 | 2LT, 3LT, 4LT |

Refer to corrosion resistance charts for suitability to any application. Guth utilizes the services of U.L., ETL, and CSA for listings. Specifications and data subject to change without notice.

Project Name:

| Type | Catalogue Number | Lamp | Comments |
|------|------------------|------|----------|
| | | | |

Flange Type Troffers Accessories

Plaster Frame Rails (Per Pair/w Spacers For Width Shown)

| SIDE RAILS INDIVIDUAL MOUNT | |
|---------------------------------|--|
| M5165 | 4' Plaster Frame Rails for 1' x 4' |
| M5166 | 2' Plaster Frame Rails for 2' x 2' |
| M5167 | 4' Plaster Frame Rails for 2' x 4' |
| SIDE RAILS ROW MOUNT | |
| M5168 | 4' Row Mount Plaster Frame Rails for 1' x 4' |
| M5169 | 2' Row Mount Plaster Frame Rails for 2' x 2' |
| M5170 | 4' Row Mount Plaster Frame Rails for 2' x 4' |
| PLASTER FRAME END PIECES (EACH) | |
| M5160 | 1' Wide Troffer |
| M5161 | 2' Wide Troffer |



a GENLYTE company

F3
R7/07

KLEENSEAL™ HL WITH OPTIONAL "VISION+" OPTICS

Hazardous Location Sealed, Flush Door Frame and Sealed Housing



FEATURES

- Hazardous location listed
- Sealed housing, door & lens
- Flush finish lens door
- Smooth cleanable surface
- Optional flange mounting
- Fits 1" or 1 1/2" grid ceiling
- NSF International

BENEFITS

- Long life
- High efficiency
- Corrosion resistant

APPLICATIONS

- Electronic, biological, pharmaceutical cleanrooms
- Most hazardous locations

Specifications/Features

GENERAL

- Hazardous Location listed.
- Totally sealed recessed fluorescent with flush door frame.

HOUSING

- 20 ga. CRS or optional stainless steel.
- White epoxy polyester powder coat finish on CRS.
- All joints silicone sealed.
- Conduit entry provided by 1/2", die-cast zinc, gasketed conduit hub field installed into housing.
- Fits 1" or 1-1/2" grid ceiling.
- Flange mounting available. Swing arm brackets are standard on flanged units. Adjusts from 1-3/4" min. to 3-3/4" max.
- Optional plaster frames available for flange units.

DOOR FRAME/LENS

- Heavy aluminum extrusion, silicone sealed mitered joints.
- White epoxy polyester powder coat finish (anodized aluminum available).
- Optional stainless steel overlap door.
- Seals ceiling interface with closed cell, cross linked, polyethylene foam gasket.
- Lens .125" thick Acrylic Prismatic silicone sealed to door frame. Normally, prisms face up. Prisms down optional. Polycarbonate Prismatic, C73 lens, and .187 thick Acrylic Prismatic available.
- Frame supported by chains for ease of maintenance.



Stainless steel fasteners draw door frame tight for high integrity seal.



20 ga. CRS housing totally sealed.

- Optional sealed parabolic louver provides 90% Visual Comfort Probability (VCP). Meets ANSI/IES standards. Increases 0-60° efficiency 12% (See VPL data sheet).

LISTINGS

- U.L. Listed Class I, Div II, Groups A, B, C, D, T4A.
- Class II, Div II, Groups F, G, T4, Class III.
- NSF International.
- Wet Location — Covered Ceiling Only.
- Listed in U.S.A. and Canada.

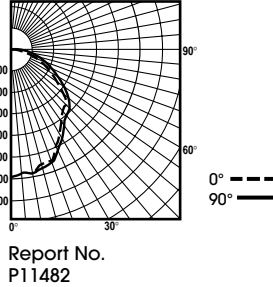
ELECTRICAL

- Ballasts mounted to housing with stake-in screws.
- IEF Option — up to 2-13W PL emergency fluorescent sockets.
- All fixtures carry the IBEW Union label to ensure quality.
- T8: Electronic, IS, 0°F, 10% THD.

Photometrics

Coefficients of Utilization
4 Lamp, 32W TAK prisms up
HL-2443GF-1TAK/EB

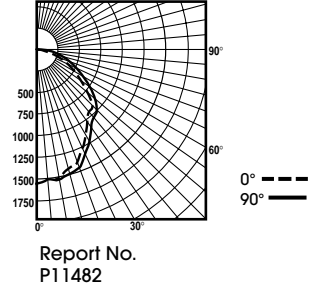
| Ceiling Refl. | 80% | | | 50% | | | 10% | | |
|---------------|--|-----|-----|-----|-----|-----|-----|-----|-----|
| | 50 | 30 | 10 | 50 | 30 | 10 | 50 | 30 | 10 |
| WALL REFL. | 50 | 30 | 10 | 50 | 30 | 10 | 50 | 30 | 10 |
| RCR | 20% Effective Floor Cavity Reflectance | | | | | | | | |
| 1 | .68 | .66 | .63 | .64 | .62 | .60 | .59 | .58 | .57 |
| 2 | .60 | .55 | .52 | .56 | .53 | .50 | .52 | .50 | .48 |
| 3 | .53 | .47 | .43 | .50 | .45 | .42 | .46 | .43 | .41 |
| 4 | .47 | .41 | .37 | .44 | .40 | .36 | .41 | .38 | .35 |
| 5 | .42 | .36 | .32 | .40 | .35 | .31 | .37 | .34 | .31 |
| 6 | .38 | .32 | .28 | .36 | .31 | .27 | .34 | .30 | .27 |
| 7 | .34 | .29 | .25 | .33 | .28 | .24 | .31 | .27 | .24 |
| 8 | .31 | .26 | .22 | .30 | .25 | .22 | .28 | .24 | .22 |
| 9 | .29 | .23 | .20 | .28 | .23 | .20 | .26 | .22 | .19 |
| 10 | .27 | .21 | .18 | .26 | .21 | .18 | .24 | .21 | .18 |



S/MH Ratio 1.2:1.0
Total Lamp Lumens 11800
Fixture Efficiency 65.4 %

Coefficients of Utilization
2 Lamp, 32W TAK prisms up
HL-2423FG-1TAK/EB

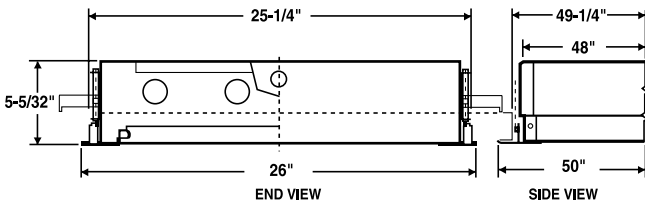
| Ceiling Refl. | 80% | | | 50% | | | 10% | | |
|---------------|--|-----|-----|-----|-----|-----|-----|-----|-----|
| | 50 | 30 | 10 | 50 | 30 | 10 | 50 | 30 | 10 |
| WALL REFL. | 50 | 30 | 10 | 50 | 30 | 10 | 50 | 30 | 10 |
| RCR | 20% Effective Floor Cavity Reflectance | | | | | | | | |
| 1 | .64 | .61 | .59 | .60 | .58 | .56 | .57 | .56 | .54 |
| 2 | .56 | .51 | .48 | .52 | .49 | .46 | .50 | .47 | .45 |
| 3 | .49 | .44 | .40 | .46 | .42 | .39 | .44 | .41 | .38 |
| 4 | .43 | .38 | .34 | .41 | .36 | .33 | .39 | .36 | .32 |
| 5 | .39 | .33 | .29 | .37 | .32 | .28 | .35 | .31 | .28 |
| 6 | .35 | .29 | .25 | .33 | .28 | .25 | .32 | .28 | .25 |
| 7 | .32 | .26 | .22 | .30 | .25 | .22 | .29 | .25 | .22 |
| 8 | .29 | .24 | .20 | .28 | .23 | .20 | .27 | .23 | .20 |
| 9 | .27 | .21 | .18 | .25 | .21 | .18 | .25 | .21 | .18 |
| 10 | .24 | .20 | .16 | .24 | .19 | .16 | .23 | .19 | .16 |



S/MH Ratio 1.2:1.0
Total Lamp Lumens 5900
Fixture Efficiency 70.0%

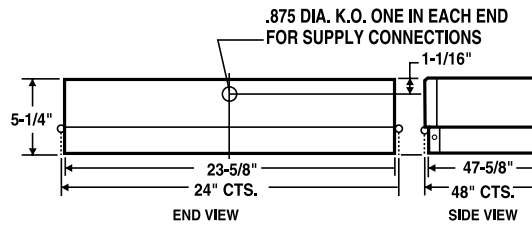
Dimensions

FLANGE



| CEILING OPENING FLANGE TYPE | |
|-----------------------------|-------------------|
| 1' x 4' | 13-1/4" x 48-1/2" |
| 2' x 2' | 25-1/4" x 24-1/2" |
| 2' x 4' | 25-1/4" x 48-1/2" |

GRID



Kleenseal™ HL Catalog Numbers

HL - 14 - 2 - 3 - G - 1TAK 1

SIZE
14 - 1 x 4
22 - 2 x 2
24 - 2 x 4

NUMBER OF LAMPS
1 - 1 Lamp
2 - 2 Lamp
3 - 3 Lamp
4 - 4 Lamp

LAMP TYPE
1 - T8 Octron 17w
2 - T8 Octron 32w

VOLTAGE
1 - 120
2 - 277
3 - 347

LENS TYPE
TAK - .125 Acrylic Prismatic
POK - Polycarbonate Prismatic
C73 - Tempered Glass Prismatic
XTK - .187 Acrylic Prismatic
VPL - Sealed Louver

DOOR FRAME
1 - Aluminum Flush
5 - Stainless Steel Overlap

MOUNTING
G - Grid
F - Flange

Options

- "/SFF" - Slow Blow (Fusetron) Fuse, Buss GMF
- "/0 Deg" - 0 Deg. on 430MA Ballast
- "/2EB" - 2 Electronic Ballasts
- "/TP" - Tamper Proof Screws
- "/DN" - Lens furnished Prisms Down
- "/IEF" - Emergency Fluorescent Sockets
- "/SSH" - Stainless Steel Housing

| FIXTURE SIZE | LAMP TYPE | NO. OF LAMPS |
|--------------|-----------|---------------|
| 1 x 4 | F32 | 2LT, 3LT |
| 2 x 4 | F32 | 2LT, 3LT, 4LT |
| 2 x 2 | F32-U | 2LT, 3LT |
| 2 x 2 | F17 | 2LT, 3LT, 4LT |

Flange Type Troffers Accessories

Plaster Frame Side Rails (Per Pair/w Spacers For Width Shown)

| INDIVIDUAL MOUNT | |
|---------------------------------|------------------------------------|
| M5175 | 4' Plaster Frame Rails for 1' x 4' |
| M5176 | 2' Plaster Frame Rails for 2' x 2' |
| M5177 | 4' Plaster Frame Rails for 2' x 4' |
| PLASTER FRAME END PIECES (EACH) | |
| M5180 | 1' Wide Troffer |
| M5181 | 2' Wide Troffer |

Project Name:

| Type | Catalogue Number | Lamp | Comments |
|------|------------------|------|----------|
| | | | |

GUTH
a GENLYTE company

F4
R7/07