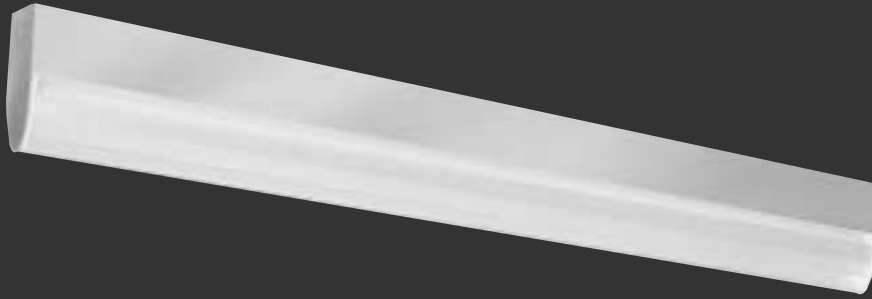


AIRELUME™ III FOR T-8 AND BIAx FLUORESCENT LAMPS

Aluminum, Steel or Stainless Housing



FEATURES

- 1.5 to 16 foot units
- Pre-drilled mounting holes
- Optional row mounting
- Prismatic compression lens
- Optional U.V. filtering optics

BENEFITS

- Adapts to room size
- Corrosion resistant
- Improved lamp access

APPLICATIONS

- Laminar flow cleanrooms

Specifications/Features

GENERAL

- Airfoil shape allows laminar air flow around fixture when tee bar mounted in cleanrooms using HEPA filters.
- Built to exceed Fed-Std-209E.
- Fits 1-1/2" & 2" wide tee bars.
- No exterior hardware — no bolts, screws or joiners.
- Aluminum available in any length up to 192".
- Steel available in 2', 3' and 4' lengths.
- Units may be mounted in continuous rows.

CONSTRUCTION

- Extruded aluminum, steel or stainless steel housing and formed end plates.
- White baked powder coat finish on CRS and aluminum.
- 3 pre-drilled holes ease assembly to standard or slotted grid.

LENS

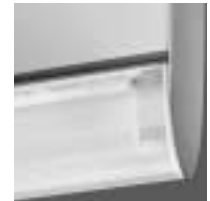
- 100% DR virgin acrylic with internal prisms for undisturbed laminar air-flow, glare control in normal viewing angles and a direct/indirect light distribution for uniform ceiling luminance and the resulting CRT visibility.
- Clear or U.V. absorbing pigmented.
- Optional pigmented lens absorbs UV and blue wavelengths to 485 nanometers for use in photosensitive areas.



Ends are sealed by high temperature die-cut silicone gasket.



Optional wireway accommodates emergency branch circuit wiring or additional circuits.



Extruded acrylic lens with internal prisms — available in clear or U.V./blue filtering.

- Lens abuts gasket of high temperature die-cut silicone to eliminate air gaps and light leaks.
- Lens provided in 4' sections with clear acrylic internal joiners for fixtures longer than 48".

ELECTRICAL

- T8: Electronic, IS, 0°F, 10% THD.
- T5: Electronic, PS, 0°F, 10% THD.
- All fixtures carry the IBEW Union label to ensure quality.

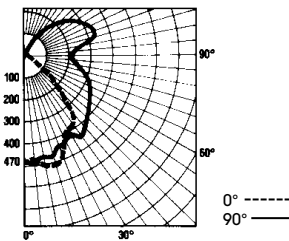
LISTINGS

- Damp location listed U.S. and Canada.

Photometrics

Coefficients of Utilization 1 Lamp, 32W T-8, PA-8004/120 Clear Lens

Ceiling Refl.	80%			50%			10%		
	50	30	10	50	30	10	50	30	10
Wall Refl.	50	30	10	50	30	10	50	30	10
RCR	20% Effective Floor Cavity Reflectance								
1	.78	.75	.71	.65	.63	.60	.50	.49	.48
2	.68	.62	.57	.57	.53	.49	.44	.41	.39
3	.60	.53	.48	.50	.45	.41	.39	.36	.33
4	.53	.46	.40	.44	.39	.35	.34	.31	.28
5	.46	.39	.34	.39	.34	.30	.30	.27	.24
6	.42	.34	.29	.35	.30	.26	.27	.24	.21
7	.37	.30	.25	.32	.26	.22	.25	.21	.18
8	.34	.27	.22	.28	.23	.19	.22	.19	.16
9	.30	.24	.19	.26	.21	.17	.20	.17	.14
10	.28	.21	.17	.23	.18	.15	.18	.15	.12

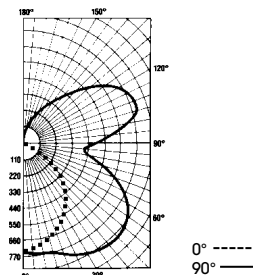


S/MH Ratio 1.4 Across
Total Lamp Lumens 2,900
Fixture Efficiency 82.5%

Report No.
P111407

Coefficients of Utilization 2 Lamp, 40W Biax Fluorescent PA-7804/120 Clear Lens

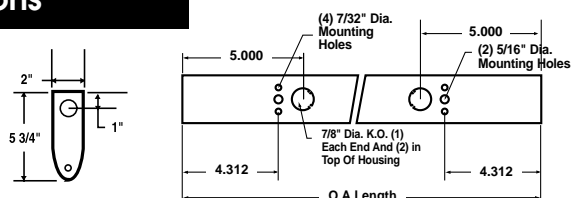
Ceiling Refl.	80%			50%			10%		
	50	30	10	50	30	10	50	30	10
Wall Refl.	50	30	10	50	30	10	50	30	10
RCR	20% Effective Floor Cavity Reflectance								
1	.78	.75	.71	.65	.63	.60	.50	.49	.48
2	.68	.62	.57	.57	.53	.49	.44	.41	.39
3	.60	.53	.48	.50	.45	.41	.39	.36	.33
4	.53	.46	.40	.44	.39	.35	.34	.31	.28
5	.46	.39	.34	.39	.34	.30	.30	.27	.24
6	.42	.34	.29	.35	.30	.26	.27	.24	.21
7	.37	.30	.25	.32	.26	.22	.25	.21	.18
8	.34	.27	.22	.28	.23	.19	.22	.19	.16
9	.30	.24	.19	.26	.21	.17	.20	.17	.14
10	.28	.21	.17	.23	.18	.15	.18	.15	.12



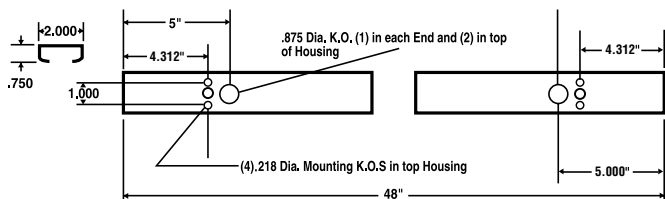
S/MH Ratio 2.1:1
Total Lamp Lumens 3,150
Fixture Efficiency 82%

Report No.
P111407

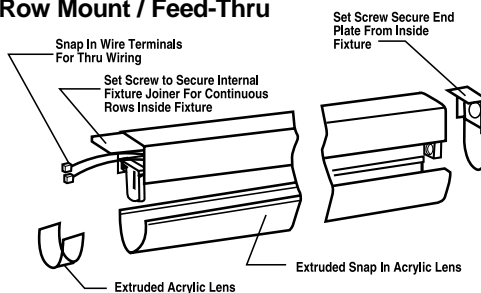
Dimensions



Raceway Optional



Row Mount / Feed-Thru



Options

- "/RM" - Row Mount
- "/WR" - Wiring Raceway
- "/BEF" - Battery Operated Emergency System-B70a for T8, B90 for 39W TT5, B50 for 40W TT5. External switch required. (See note)
- "/DIM" - Dimming Ballast
- "/FF" - Fast Acting Fixture Fuse, Buss GLR
- "/SFF" - Slow Blow (Fusetron) Fuse, Buss, GMF
- "/EB" - For Electronic Ballast
- "/RIF" - For Radio Interference Filter
- "/YL" - Ultraviolet and Blue Wavelength Filtering Lens
- "/FW" - For Feed-Thru Wiring

NOTE: WHEN FEED-THRU WIRING AND EMERGENCY BATTERY IS REQUIRED, SPECIFY WHETHER SWITCHED OR UNSWITCHED.

Project Name:

Type	Catalogue Number	Comments

Airlume™ III Catalog Numbers

PA - 78 - 02 - 120 - EB

HOUSING MATERIAL
PA - Painted Aluminum
WS - White Cold Roll Steel
SS - Stainless Steel

VOLTAGE
120 - 120V
277 - 277V
347 - 347V

LAMP TYPE
78 - F40BX
80 - F32T8

FIXTURE LENGTH
01 - 18"
02 - 24"
03 - 36"
04 - 48"
08 - 96"*
12 - 144"*
16 - 192"*
* Aluminum only

Fixture Length	Lamp Type	No. of Lamps
18"	78 - 39W	1 LT
24"	78 - 40W	1 LT
24"	80 - 17W	1 LT
36"	78 - 39W	2 LT
36"	80 - 25W	1 LT
48"	78 - 40W	2 LT
48"	80 - 32W	1 LT

Fixture Length	Lamp Type	No. of Lamps
96"	78 - 40W	4 LT
96"	80 - 32W	2 LT
144"	78 - 40W	6 LT
144"	80 - 32W	3 LT
192"	78 - 40W	8 LT
192"	80 - 32W	4 LT

GUTH

a GENLYTE company

F 10

R7/07